

Tech Note

Observant V1 Camera

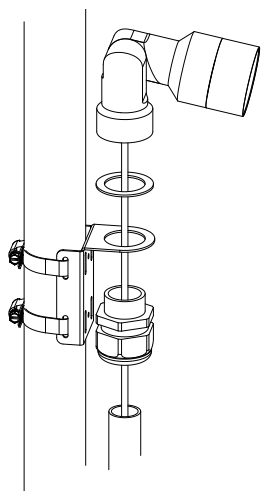
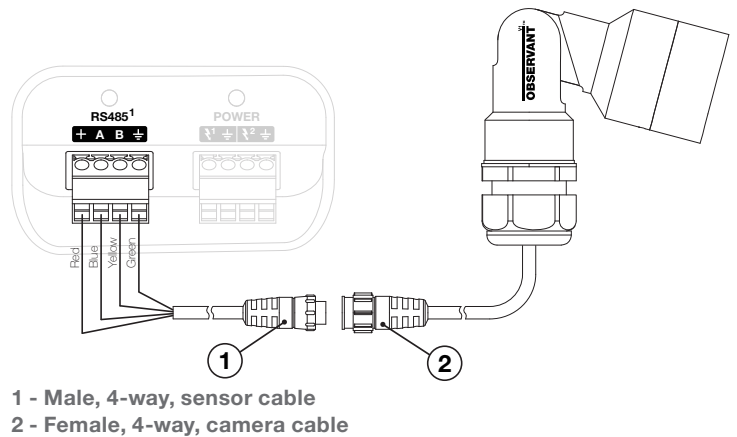
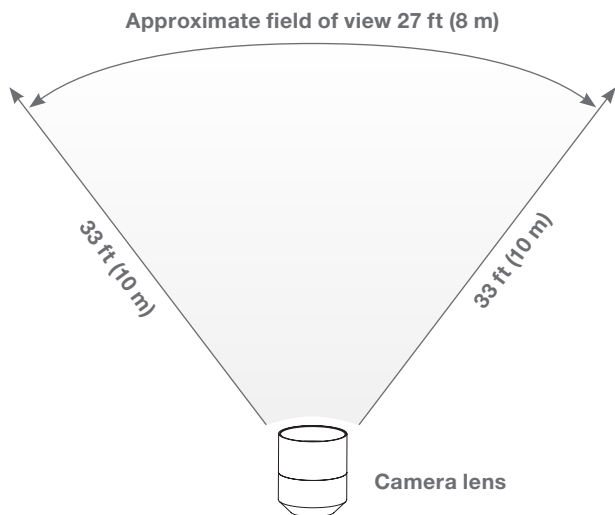
The V1 is a low-power, ruggedised, color, still-image camera.

Electrical connection

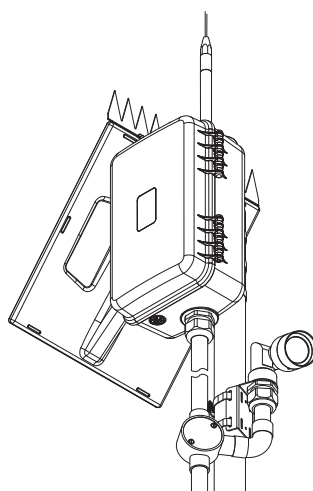
- The V1 is a standard, Modbus serial-communications device and is supplied with the Observant, 4-way, device connector.
- The standard, C3, device cable (DTC) is 19' 8" (6 m) long. The cable is easily shortened by rewiring the 4-way, screw-terminal block, which plugs into the C3.
- If a longer cable run is needed, a 30 ft (10 m) extension cable (DCE) is available.
- Either RS485 port on the C3 may be used.

Installation notes

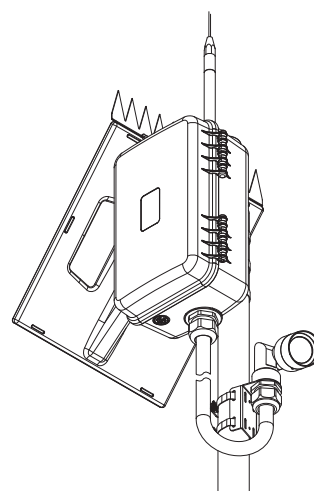
- The V1 can mount to the same pole as the C3, using the provided pole-mount bracket.
- High-quality, flexible conduit or standard, rigid, electrical conduit should be used to protect the cabling.
- Alternatively, if elevation allows, the V1 can be mounted directly into the 32 mm, bottom-entry hole of the C3.
- Always ensure the V1 body vent hole is oriented downward.
- Ensure that the vertical-adjustment bolt is fully tightened after aiming the camera.
- The 4-way, device connector can be threaded through standard 1" (25 mm) electrical conduit.



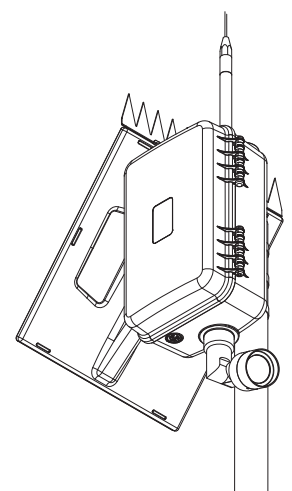
V1 mounting
exploded view



Remote V1 mounting
(via rigid conduit)



Remote V1 mounting
(via flexible conduit)



V1 mounted directly to
the Solar Enclosure.

OBS-USR-TN003-R1

Observant, Inc.
4221 Northgate Blvd, #5,
Sacramento, CA 95834, USA
1 (877) 730-0700

Observant, Pty. Ltd.
77 Argyle Street, Fitzroy,
Victoria 3065 Australia
1300 224 688

Email info@observant.net
Web observant.net

OBSERVANT™